



Cultivate Your Dreams

MAHINDRA TRACTORS



PARTS CATALOGUE
FS 254 II TRACTOR

FOREWORD

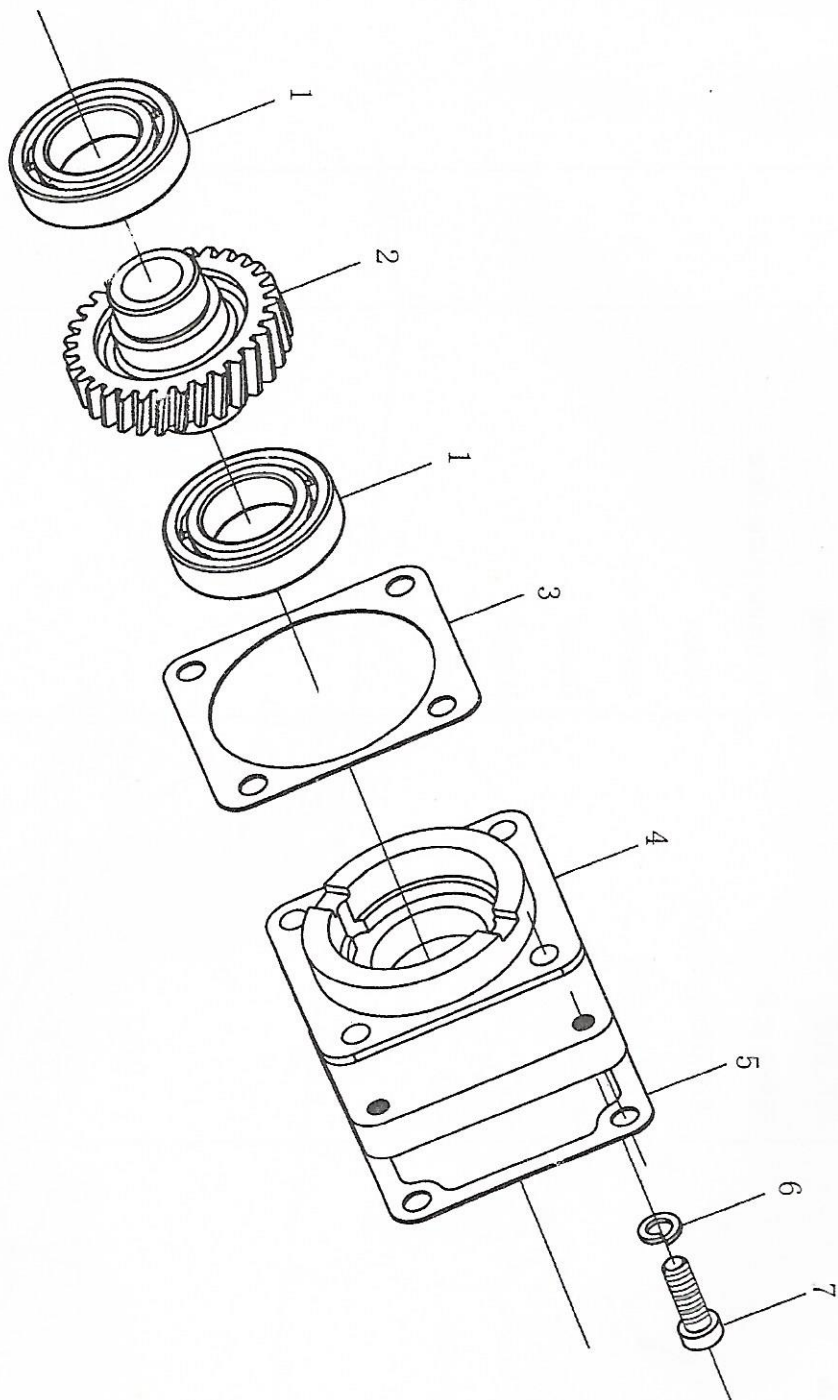
25411 tractor are new models of our tractor family. The design of the tractors is based on the requirements of our end – users, especially on those from our foreign customers. In addition to a good appearance, they possess a variety of practical functions and can be used in both dry and paddy field. The design of the tractor family involves a “building-block” conception; standard and interchangeable components can be combined to form different models supplying different wants. There are also many optional mechanisms for our clients to choose from.

In accordance with the company’s policy of continuous improvement to its products, alterations in the structure of the tractor may be made at any time without notice.

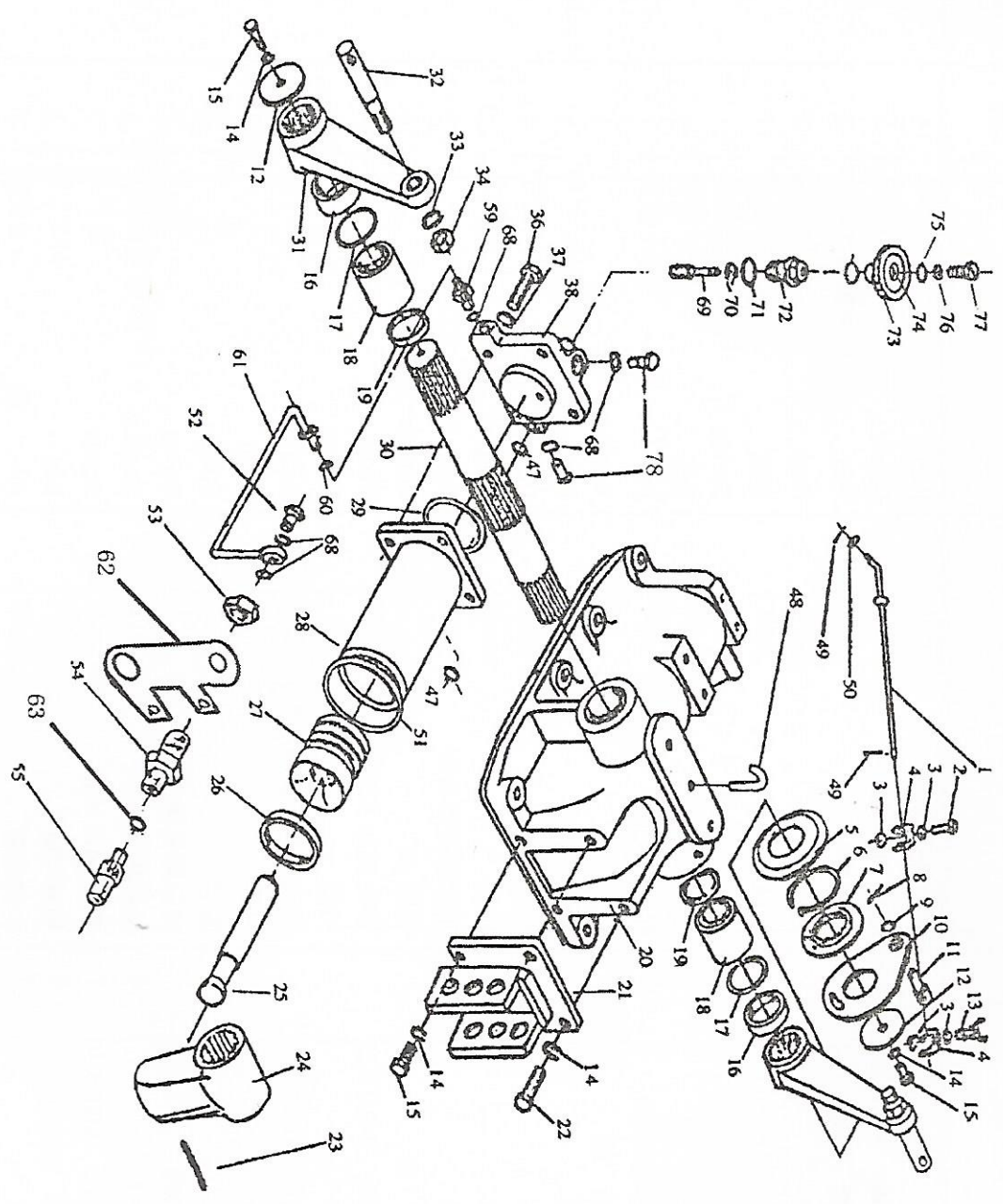
CONTENTS

1. CYLINDER HEAD.....	1
2. CYLINDER BLOCK (1).....	6
3. CYLINDER BLOCK (2).....	9
4. CAMSHAFT.....	12
5. CRANKSHAFT & CONNECTING ROD.....	14
6. LUBRICATING OIL PUMP.....	17
7. LUBRICATING OIL FILTER.....	19
8. LUBRICATING OIL SUMP.....	21
9. INLET MANIFOLD ASSY.....	23
10. EXHAUST MANIFOLD ASSY.....	26
11. COOLING WATER PUMP & FAN.....	28
12. RADIATOR & HOSES.....	31
13. FUEL INJECTION PUMP, INJECTOR & FUEL SYSTEM.....	33
14. FUEL FILTER.....	35
15. HYDRAULIC PUMP BRACKET.....	37

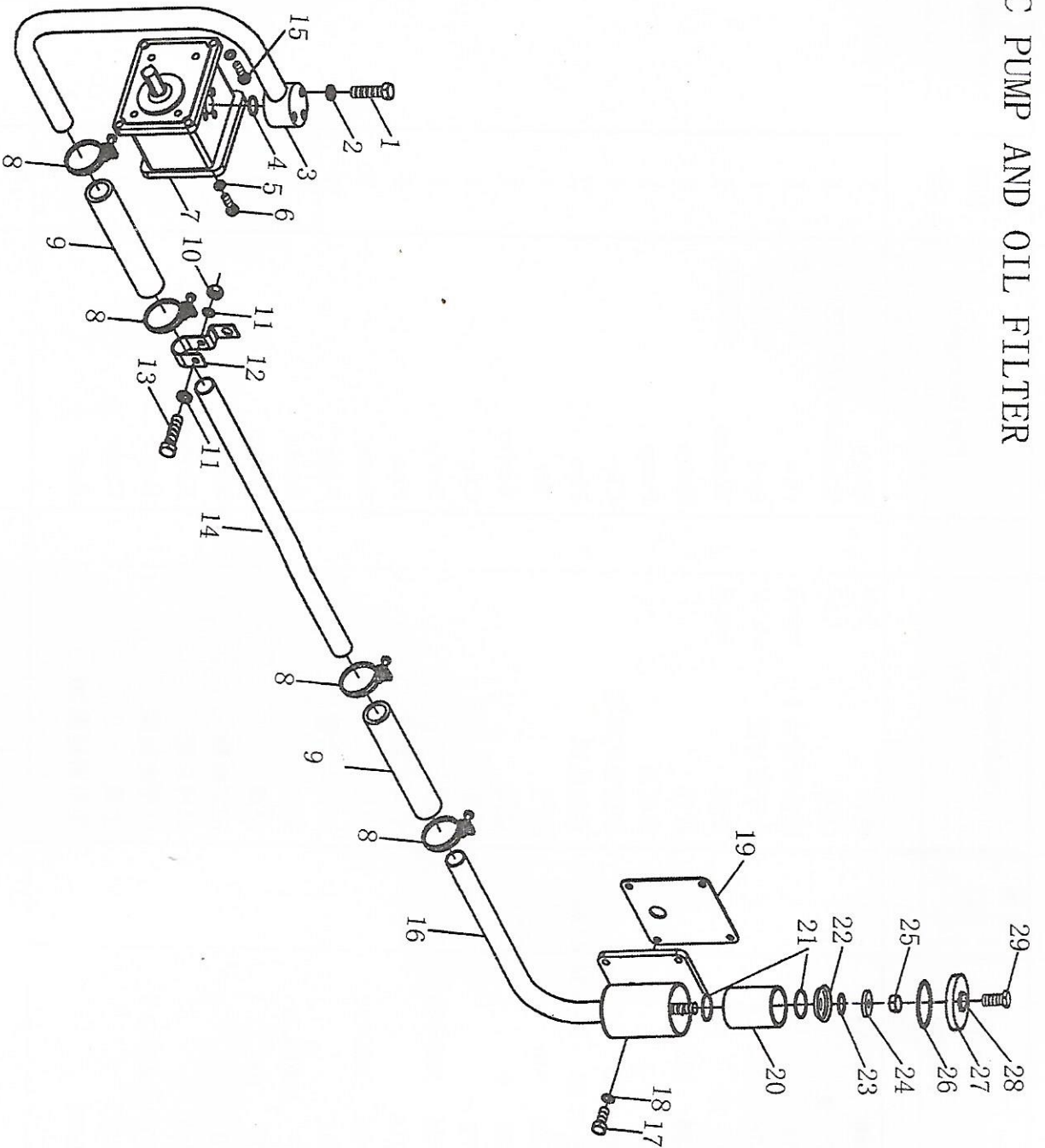
15. HYDRAULIC PUMP BRACKET



35. HYDRAULIC LIFT COVER (PRE-SELECTED DEPTH CONTROL)



24. HYDRAULIC PUMP AND OIL FILTER



16. THROTTLE CONTROLS.....	39
17. CLUTCH (1).....	41
17. CLUTCH (2).....	43
18. FRONT DRIVE AXLE (1).....	45
18. FRONT DRIVE AXLE (2).....	49
19. WHEELS, TYRES.....	53
20. WHEELS, TYRES AND REAR WEIGHTS.....	55
21. DRAWBAR.....	57
21. SWINGING DRAEBAR.....	59
22. TRANSMISSION (1).....	61
22. TRANSMISSION (2).....	66
23. REAR AXLE (-).....	69
23. REAR AXLE (-).....	72
24. FINAL DRIVE.....	75
25. STEERING.....	78
26. PTO SHAFT.....	81

27. TRANSFER.....	85
28. BRAKE (1).....	91
28. BRAKE (2).....	94
28. BRAKE (3).....	96
29. SEAT.....	98
30. SAFETY FRAME (OPTIONAL).....	100
31. HOOD.....	102
32. FLOOR AND FENDERS	105
33. ELECTRIC SYSTEM.....	108
34. FREL TANK.....	111
35. HYDRAULIC LIFT COVER.....	113
36. DISTRIBUTOR.....	117
37. LINKAGE.....	120
38. HYDRAULIC PUMP&PIPES.....	123
39. FRONT WEIGHT.....	126